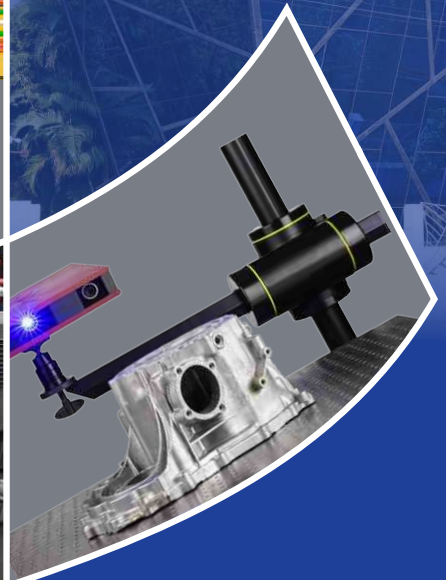
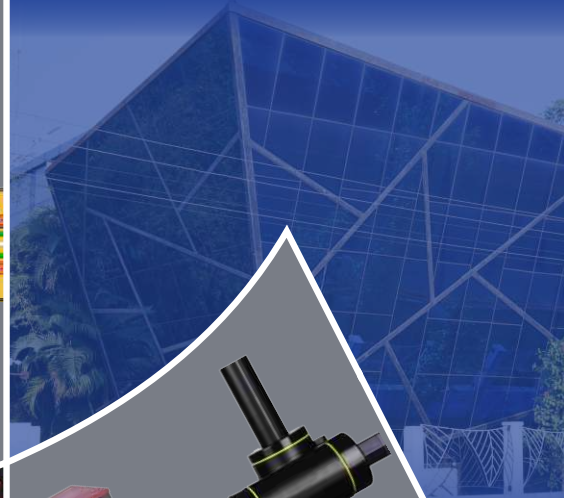


† DIETECH INDIA (P) LIMITED

..... EST. 1995

Towards Growth & Excellence

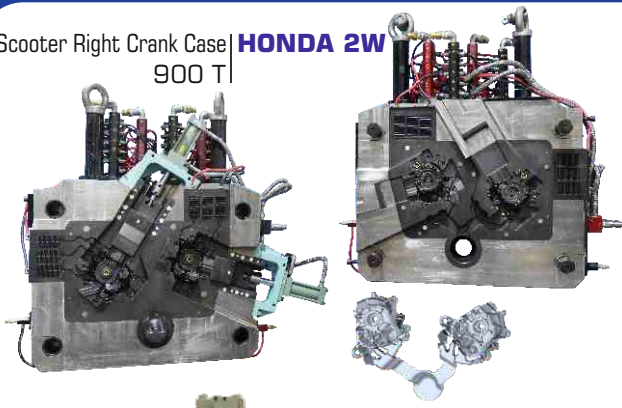


www.dietechindia.com

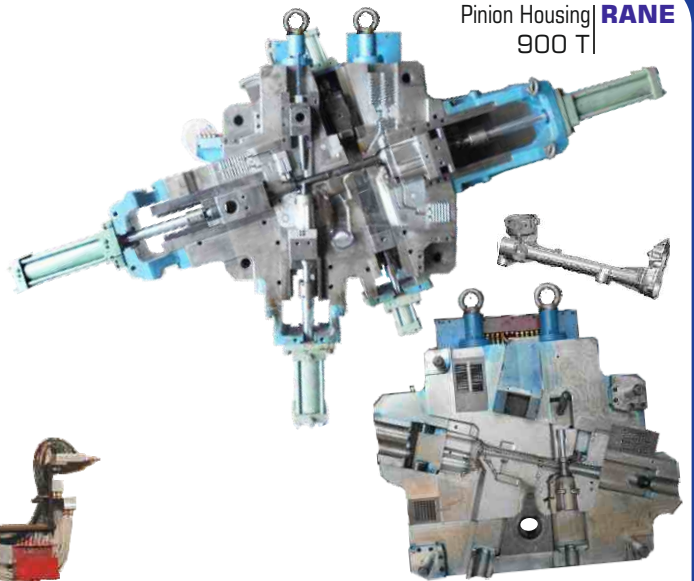


SCAN HERE

Scooter Right Crank Case | **HONDA 2W**
900 T |



Pinion Housing | **RANE**
900 T |



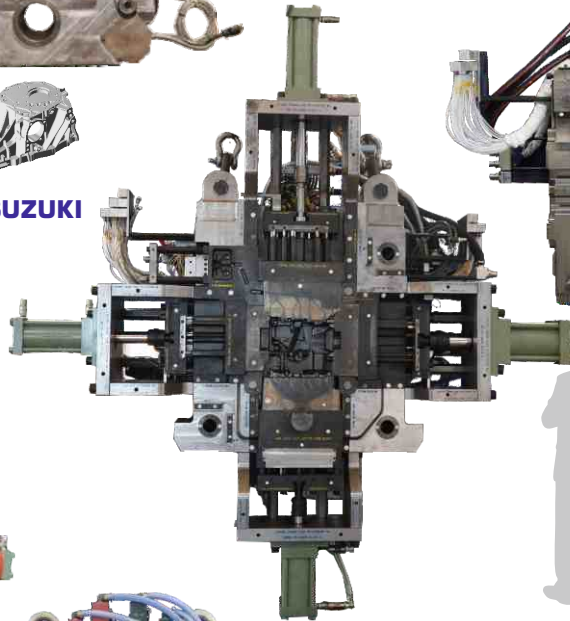
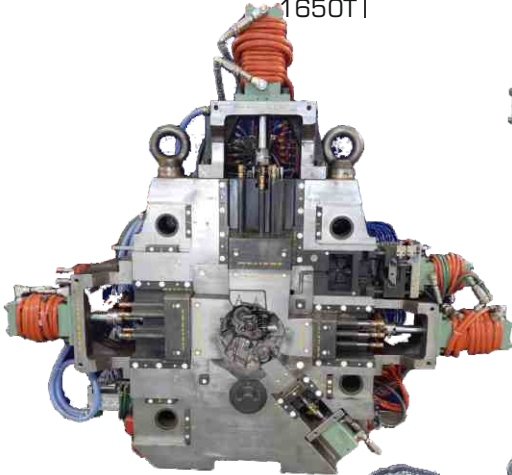
Case Trans. Left | **AHRESTY INDIA.**
800T |



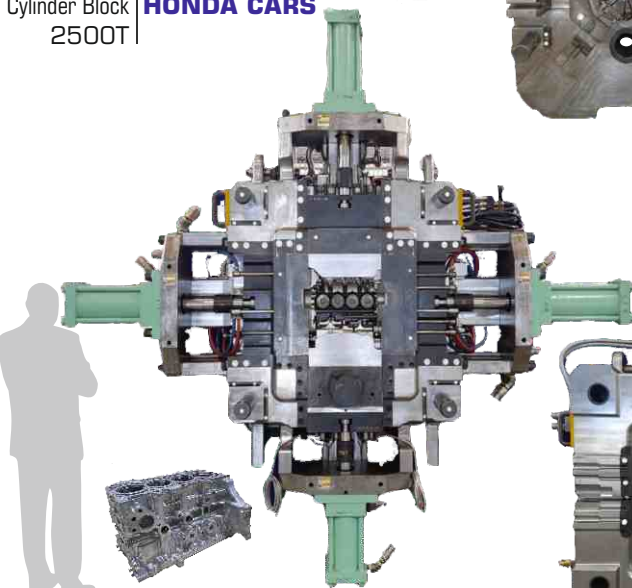
Case Stiffner | **AHRESTY INDIA.**
1650T |



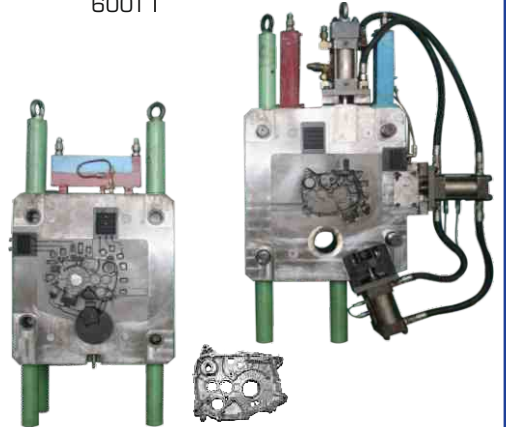
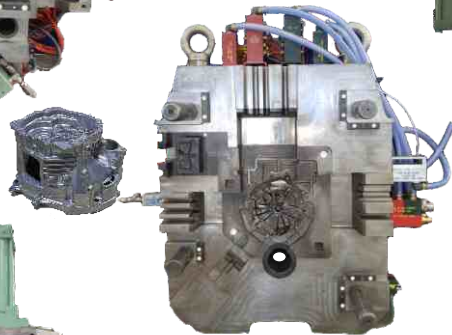
Transmission Housing Right | **MARUTI SUZUKI**
1650T |



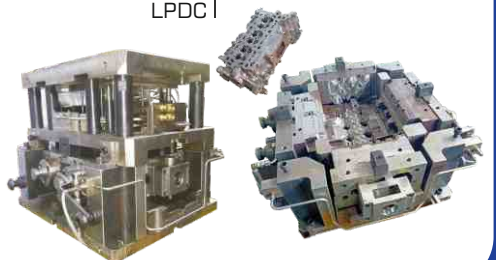
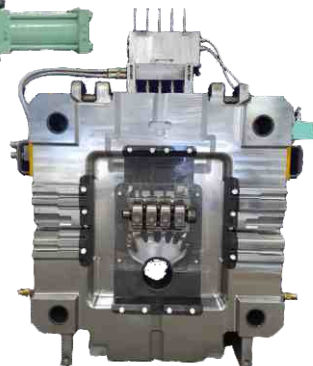
Cylinder Block | **HONDA CARS**
2500T |



Crank Case Right | **TVS MOTOR COMPANY**
600T |

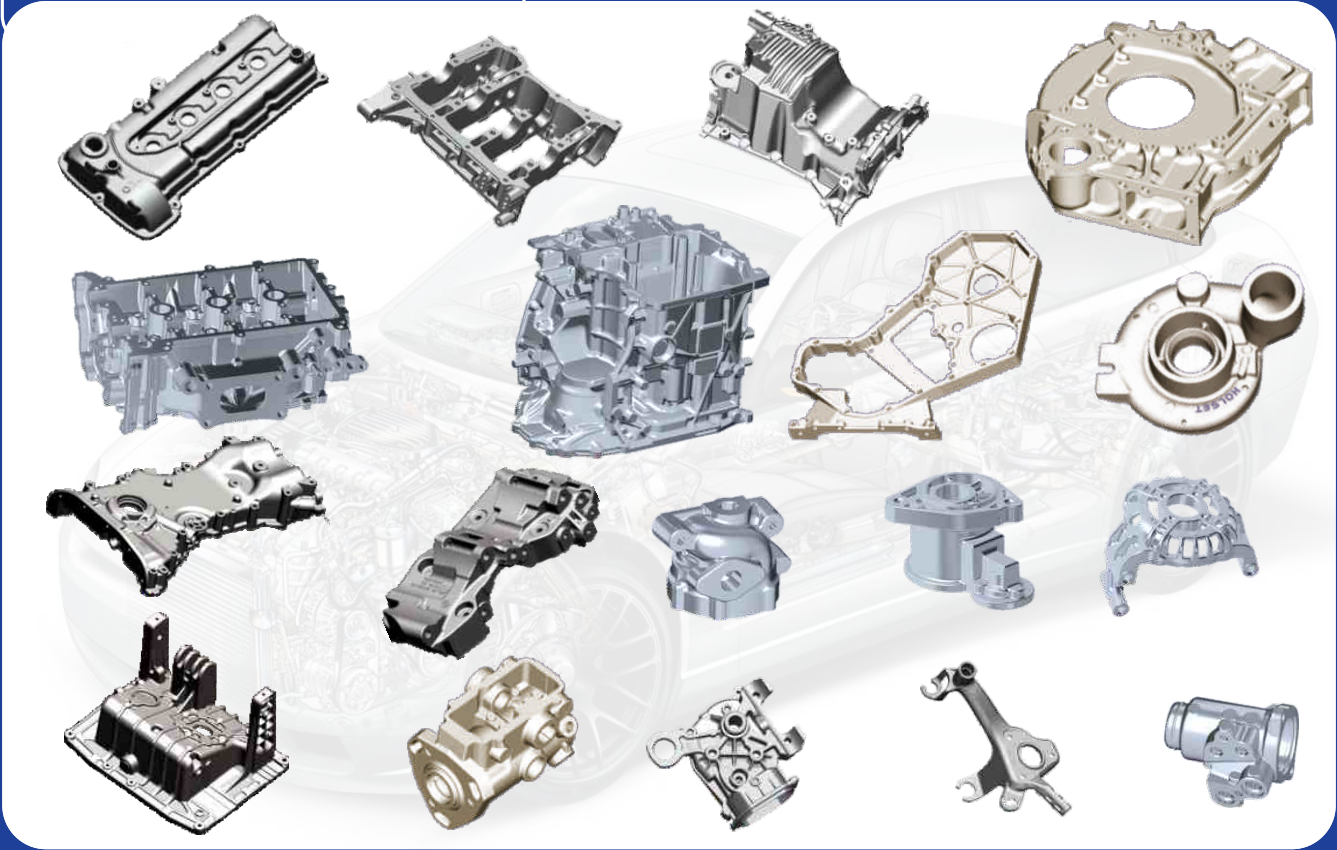


Multi Cylinder Head | **MARUTI SUZUKI**
LPDC |

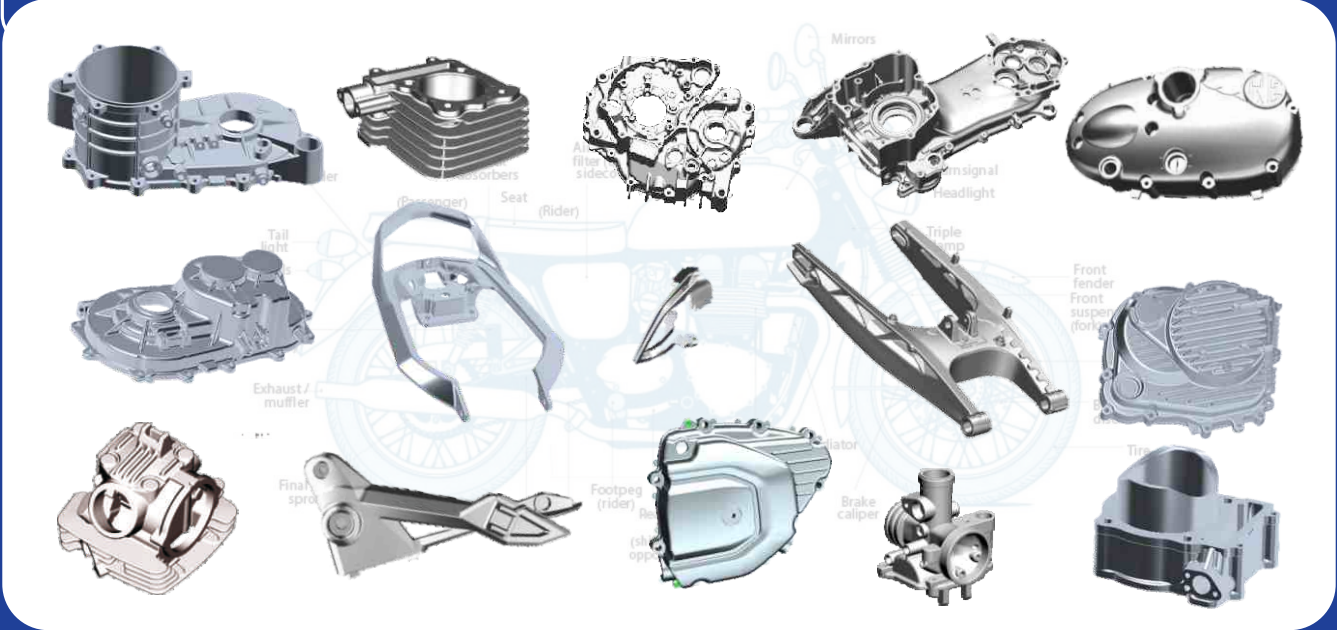


DIES MANUFACTURED FOR

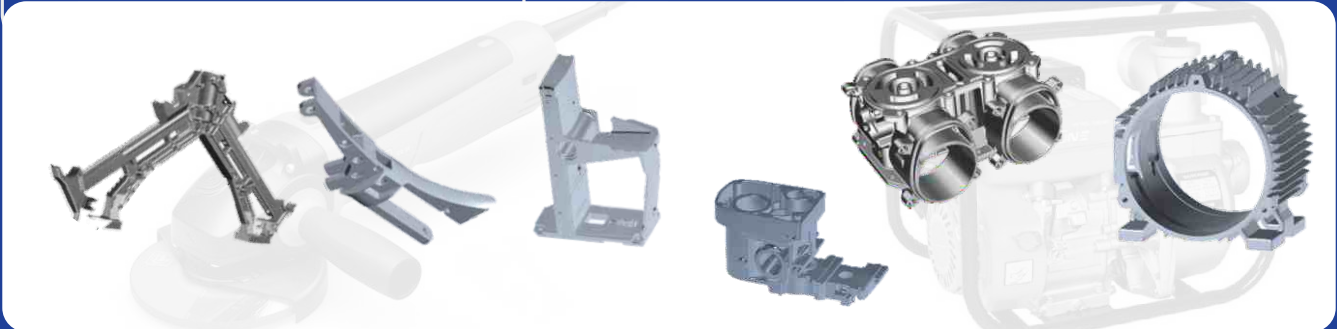
LMV & HMT Segment :



TWO Wheelers Segment :



Non Automotive Segment :



CNC MACHINING FACILITIES

VISION WIDE

Double Column VMC 3088 x 2688 x 1008



DMG
5 Axis HSC 105V



HASS
VF - 4



MAKINO
Wire Cut U6 910 x 710



OKADA
Graphite Master 600 x 500



AGIE CHARMILLE
EDM Form 30



HSPK DOUBLE HEAD
CNC EDM 1700 x 900



DAHLIH HMC
HMC 2000 x 1000 x 1000



HDT GLOBAL
Gun Drilling 2000 x 2000 x 2000



WIM
Gun Drilling
1000 x 700



DMTG
CNC Lathe
Ø500 x 1500



PRECIHOLE
Core Pin Gun Drilling 750



YCM
Double Column NDC
2000 x 1600

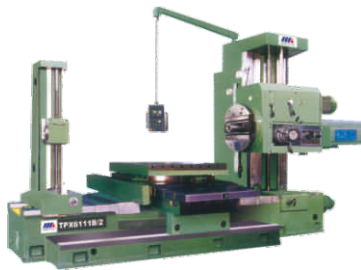
Spotting Press

2000 x 1500 x 1500 mm - 100T



Horizontal Boring

1800 x 1600 x 2500 mm - 10T



Proving Facilities - PDC 2200T, 1250T, 600T & 250T

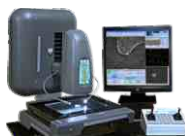


Quality Assurance - Facilities

LK (Nikon Scanning Head)
CNC - CMM



Rapid I V 4020J LX
Vision Measuring System



gom
Optical Measuring Techniques



Surface Treatment-Facilities

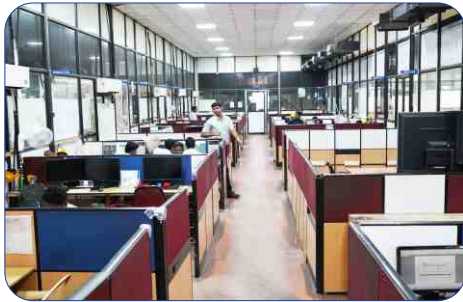
Vibrant
Stress Relieving Furnace
1200 x 1250mm - 800Kg



Vibrant
Gas Nitriding Furnace with H₂ Analyser
950 x 1000mm - 500Kg



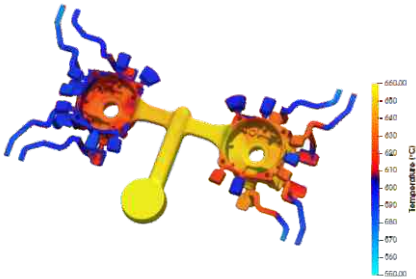
FACILITIES



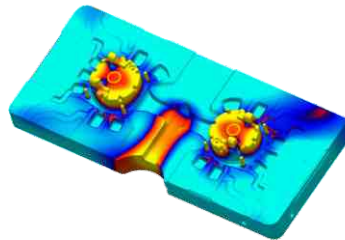
CELLS | Design & Manufacturing



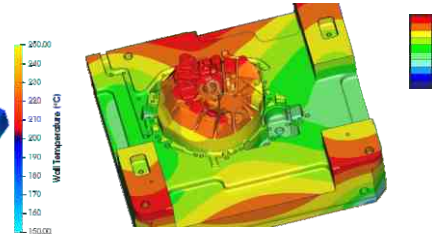
SHOP FLOOR | Assembly Facilities



Metal Flow Analysis

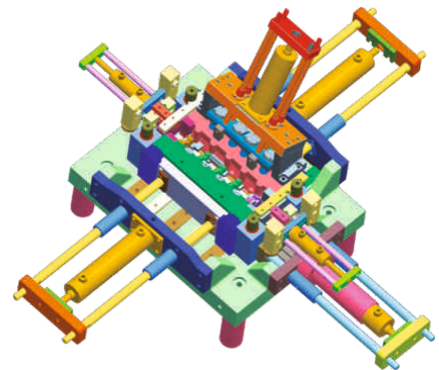
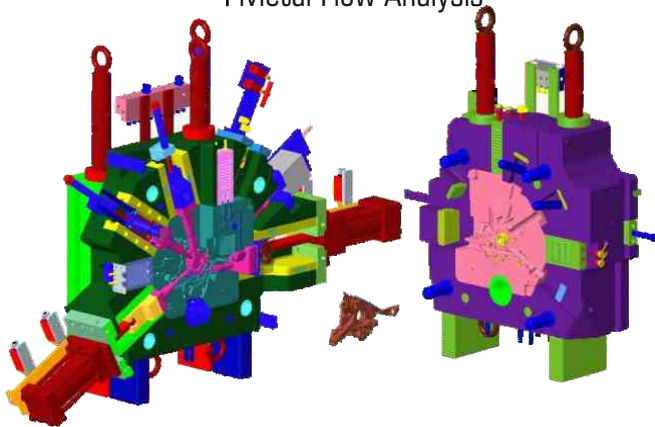


Thermal Die Analysis



Die Stress Analysis

FLOW 3D | Metal Flow Analysis



PDC | Die Assembly **CAD MODEL**

LPDC | Multi Cylinder Head **CAD MODEL**



CAD / CAM | Softwares

REVERSE ENGINEERING | Casting & Core

Quality Management

Dietech ensure quality through various methods, like control plans, quality check points, DFMEA, PFMEA, die parts and casting inspection through a blue light scanner, and die PPAP by the QAD-Product department.

Continual improvements in the product as well as the process of the company are achieved with the employee's participation through Quality Circle Group (QCG) meetings, where non conformance is identified and corrective and preventive measures is initiated. We call this phenomenon as DIR (Do It Right).



MISSION	VISION	CORE VALUES
<p>To achieve global standards for design and manufacturing of dies to meet, customer expectations and demand through.</p> <ul style="list-style-type: none"> Emphasizing Innovation Empowered Team Creating Value To Customers 	<p>To become a globally recognized Tool Room for Die Casting mold with cutting edge technology</p> <ul style="list-style-type: none"> Advanced Design And Manufacturing (ADM) Total Productive Maintenance (TPM) Computer Integrated Dies (CID) 	<ul style="list-style-type: none"> RESPECT SERVICE INNOVATION OBJECTIVITY TRUST

Our Customers



Our Team



Contact Us

+91 95000 41302



Plant 1
Total Area : 40,000 SQ Ft

Plot No. K-19, Phase II, SIPCOT Industrial Park, Mambakkam Village, Sriperumbudur Tk, Kanchipuram Dist. 602 105. Tamil Nadu, India.

Tel : +91 44 6711 0302
Fax : +91 44 6711 0301



Plant 2
Total Area : 40,000 SQ Ft

Plot No. L-4, Phase II, SIPCOT Industrial Park, Mambakkam Village, Sriperumbudur Tk, Kanchipuram Dist. 602 105. Tamil Nadu, India.

email : marketing@dietechindia.com
website : www.dietechindia.com